



P.T.B.-POLYCREPI

Decorative
ornamental plaster



Qualities

P.T.B.-POLYCREPI is a decorative ornamental plaster for indoor and outdoor use. Your use of different types of tools such as texturing rollers, combs, and the like, in combination with your own creative imagination, will be responsible for the ultimate form and shape of the decorative result. P.T.B.-POLYCREPI is applied under properly dry conditions but not under full sunlight exposure and at a minimum temperature of +5°C.

P.T.B.-POLYCREPI is known for possessing the following properties: excellent adhesion and a high mechanical resistance; allows the substrate to breathe; allows the application of a thick covering layer and thus promotes long life; both the rustic and modern-day finishing hides unattractive substrates. P.T.B.-POLYCREPI can be painted over with, for instance, POLYCOLORIT®.



Directions for use

DOSAGE AND COLOURS:

Depending on the substrate and the desired texture: ± 2 to 4 kg/m². P.T.B.-POLYCREPI comes in broken white. It can be variegated by using concentrated universal pigments or by use of POLYCOLORIT®.



PREPARATION OF THE SUBSTRATE:

P.T.B.-POLYCREPI is always to be applied on a dust-free, stable, clean, dry, oil-free and grease-free substrate. Moisture in the substrate must be absolutely avoided. Suitable substrates are; concrete, aerated concrete, cement work, plasterwork.

It is recommended that the substrate is to be treated first with:

- either 1) P.T.B.-POLYQUARTZ diluted with 5 to 10% water;
- or 2) a solution of 1 part COMPAKTUNA® (PRO) and 3 parts water;
- or 3) P.T.B.-PRIMER



PROCESSING :

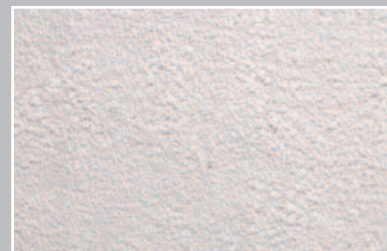
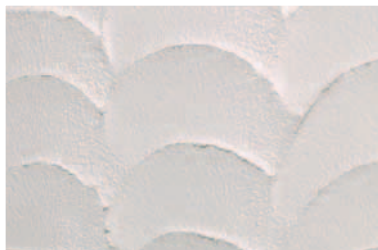
P.T.B.-POLYCREPI is applied directly with a roller or a trowel. Following the initial treatment, P.T.B.-POLYCREPI can be textured with all types of different tools such as a roller, a trowel, a mason's float, a brush,... Always make sure to finish one section completely and in one application before starting the next one. When making application with the texturing roller, always start from the top and work your way down. For 24 hours, make sure that P.T.B.-POLYCREPI does not come into contact with water. P.T.B.-POLYCREPI will be made water-repellent by using IMPERPLAST®.



Storage

P.T.B.-POLYCREPI must be kept and processed in and under frost-free conditions. Always clean your tools after use.

Refer to clause p. 2.



Mixing ratio	Consumption	Packaging
undiluted	± 2 to 4 kg/m ² , depending on the substrate and the desired texture	8 and 15 kg
Colours	Drying time	Application temperature
broken white, can be variegated with POLYCOLORIT® or with universal pigments	for 24 hours, no contact with water	+ 5 to + 30 °C